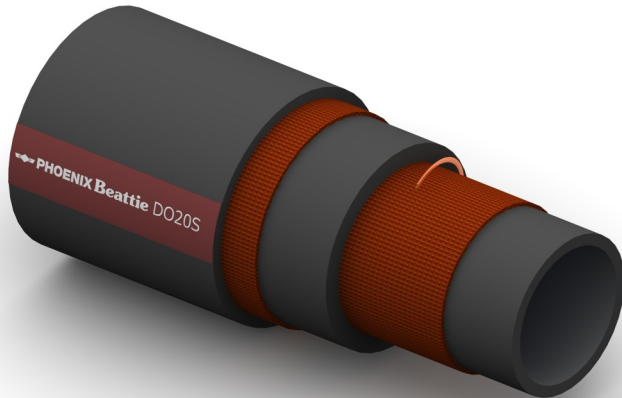


DO20S Fuel and Oil Delivery



Construction:

Tube: Black NBR .

Reinforcement: High Tensile Textile Cords Plus Antistatic Wire.

Cover: Black Conductive NBR; Abrasion, Ozone and Hydrocarbon Resistant.

Temperature Range: -30°C To +100°C.

Typical Application: Fuel Oil Delivery, with up to 50% Aromatic Content, suitable for Seawater, Mud and general offshore applications, long lasting in bunkering applications.

Branding:  **PHOENIX Beattie DO20S OIL DELIVERY WP 20 BAR**
White Text on a Brown Stripe.

Part No	Inside Dia		O.D.	Working Pressure		Minimum Burst Pressure		Min Bend Rad	Weight
	mm	Inch		Bar	PSI	Bar	PSI		
DO20S-006	10	3/8	19	20	300	80	1200	78	0.35
DO20S-008	13	1/2	23	20	300	80	1200	78	0.35
DO20S-012	19	3/4	30	20	300	80	1200	114	0.58
DO20S-016	25	1	37	20	300	80	1200	150	0.74
DO20S-024	38	1.1/2	51	20	300	80	1200	228	1.10
DO20S-032	51	2	64	20	300	80	1200	306	1.40
DO20S-048	76	3	93	20	300	80	1200	456	2.70
DO20S-064	102	4	120	20	300	80	1200	612	3.80
DO20S-080	127	5	148	20	300	80	1200	762	5.50
DO20S-096	152	6	173	20	300	80	1200	912	6.50