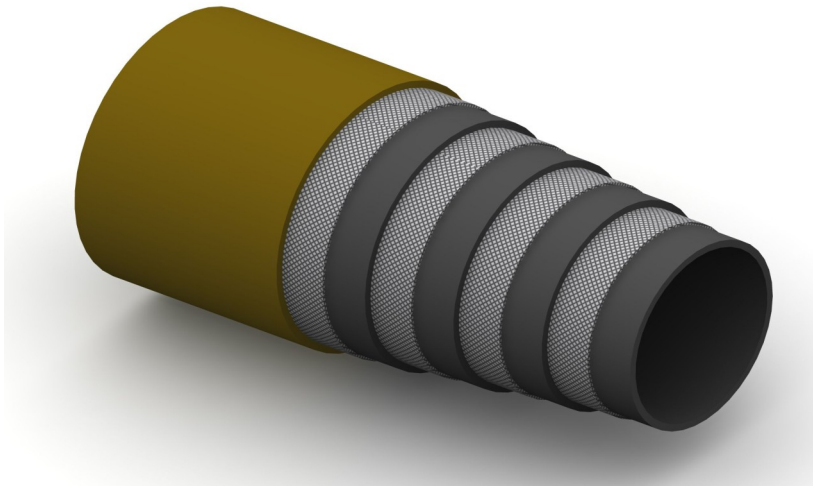


BX20



Construction:

Tube: Neoprene/Layer of Synthetic Fabric.

Reinforcement: Four Plies of High Tensile Steel Wire.

Cover: Synthetic Rubber; Weather, Oil and Abrasion Resistant.

Temperature Range: -40°C To +121°C.

Part No	Inside Dia		O.D.	Working Pressure		Minimum Burst Pressure		Min Bend Rad	Weight
	mm	Inch		mm	Bar	PSI	Bar		
BX20-12	19	3/4	23	345	5000	1380	20000	240	1.59
BX20-16	25	1	39	345	5000	1380	20000	300	2.20
BX20-20	32	1.1/4	50	345	5000	1380	20000	415	3.69
BX20-24	38	1.1/2	57	345	5000	1380	20000	500	4.79
BX20-32	51	2	71	345	5000	1380	20000	635	7.48