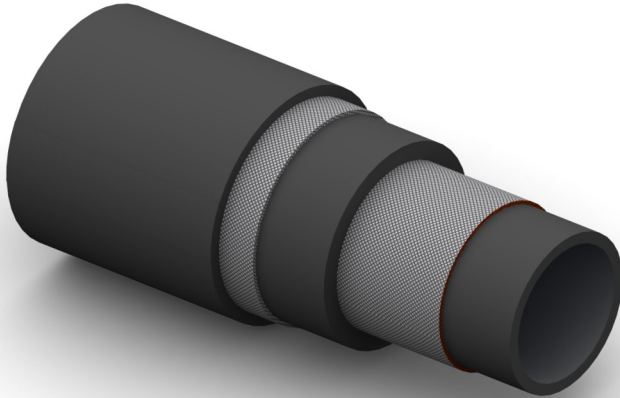


BW8 Exceeds The Requirements Of SAE 100R2



Construction:

Tube: Nylon 11.

Reinforcement: Two High Tensile Steel Wire Braids.

Cover: Polyurethane. (Pin Pricked For Gas Applications)

Temperature Range: -40°C To +95°C.

Application: Multipurpose, including Divers Breathing, Hot Water and Hydraulics, also suitable for many Industrial Gases, (eg. Helium, Air, Helox – Max 25% O₂) and Hydraulic Oils.

Recommended for applications where kink resistance is imperative and there is contact with seawater.

Part No	Inside Dia		O.D.	Working Pressure		Minimum Burst Pressure		Min Bend Rad	Weight
	mm	Inch		mm	Bar	PSI	Bar		
BW8-04	6	1/4	13.6	448	6500	1790	26000	100	0.30
BW8-05	8	5/16	15.4	396	5750	1584	23000	110	0.35
BW8-06	10	3/8	17.0	345	5000	1380	20000	127	0.42
BW8-08	12	1/2	21.4	276	4000	1124	16000	178	0.51
BW8-10	16	5/8	23.4	207	3000	828	12000	203	0.62
BW8-12	19	3/4	28.5	172	2500	690	10000	241	0.89
BW8-16	25	1	36.1	138	2000	552	8000	305	1.02